

Attachment 10

Notices & Certificates

Neighborhood Meeting



CERTIFICATE OF MAILING

I, Yvonne Leza, certify that

Letters of notification were mailed in accordance with Section 15.02 of the City of Longmont Land Development Code for a

X Neighborhood Meeting

_____ Notice of Application

_____ Planning and Zoning Commission Public Hearing to be held on _____

_____ City Council Public Hearing to be held on _____

for the application identified as

Modern West 2
Project Name

On the subject property located at

Southwest intersection of Rogers Road and Andersen Street
Site Address or Location Description

The letter was sent on: January 25, 2023

A copy of the letter and list of recipients.

I certify that the foregoing information is true and correct.

Signature _____

Date _____



CITY OF LONGMONT | Planning Division

January 25, 2023

Notice of Neighborhood Meeting

If you need interpretation, accommodations, or other special assistance in order to participate in a meeting, please contact the Planning Division at 303-651-8330 or longmont.planning@longmontcolorado.gov, at least 48 hours prior to the meeting to make arrangements.

Si necesita interpretación, servicios especiales u otra asistencia adicional para participar en alguna reunión, comuníquese con 48 horas de anticipación al Departamento de Planificación Urbana al 303-651-8330 o escríbanos a longmont.planning@longmontcolorado.gov, para así hacer los pertinentes arreglos.

ModernWest Phase 2

Proposal: Development of 27.25-acre site in southwest Longmont with a mix of housing, commercial, office, light industrial and amenity spaces in a manner consistent with the property's Mixed Use-Employment (MU-E) zoning.

Project Location: Lot 2, Williams Property Conveyance Plat, southwest of intersection of Rogers Road and Andersen Street

When: Thursday, February 9, 2023, at 6:00pm

Where: Virtual meeting with livestream available at <https://www.youtube.com/@cityoflongmont>

Property Owner: Lot 2 Rogers Road LLC

Applicant: Mickey Leyba, Permontes Group

Background: This property is part of the Schlager Williams Annexation, and the proposed uses would require an amendment to the concept plan associated with this annexation. At the time of annexation, the property was zoned BLI. This zoning was changed to MU-E with the City of Longmont Land Development Code update in 2018. The property is immediately north of Andersen Storage and the preliminarily platted ModernWest Phase 1 site. This proposed project would be Phase 2 of that development.

Future Meetings:

The City Council is the decision-making body on Concept Plan Amendments. If an application is submitted for this project and goes through the full development review process, public hearings with the following will take place:

- Planning and Zoning Commission Hearing: Date TBD
- City Council Public Hearings: Date TBD

Additional notification of all public hearings before the Planning & Zoning Commission and the City Council will be provided, as required by City regulations. If you have questions regarding the neighborhood meeting,

the development review process, code requirements, or other specific items, please contact the staff member identified below.

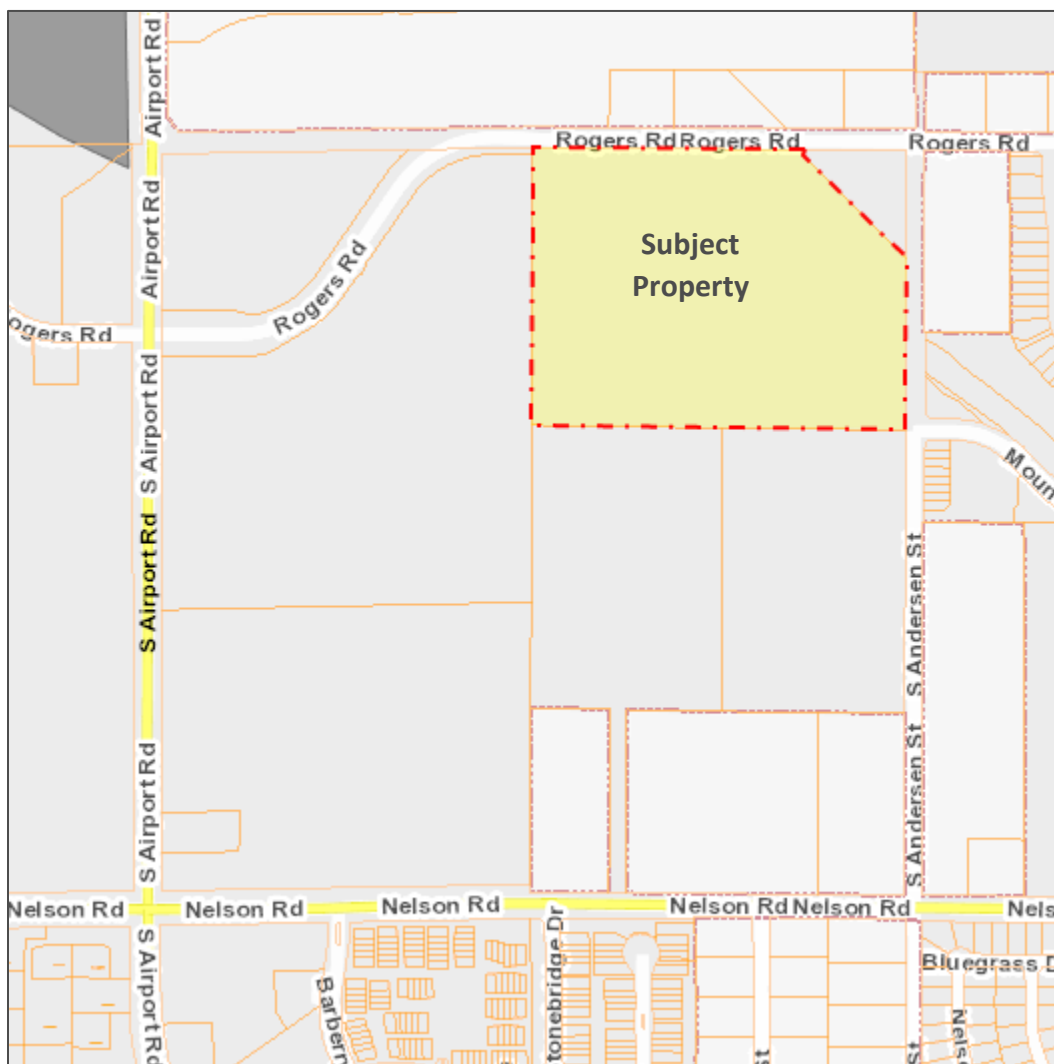
Applicant Contact:

Mickey Leyba
Permontes Group
720-684-4981
mleyba@permontesgroup.com

City Staff Contact:

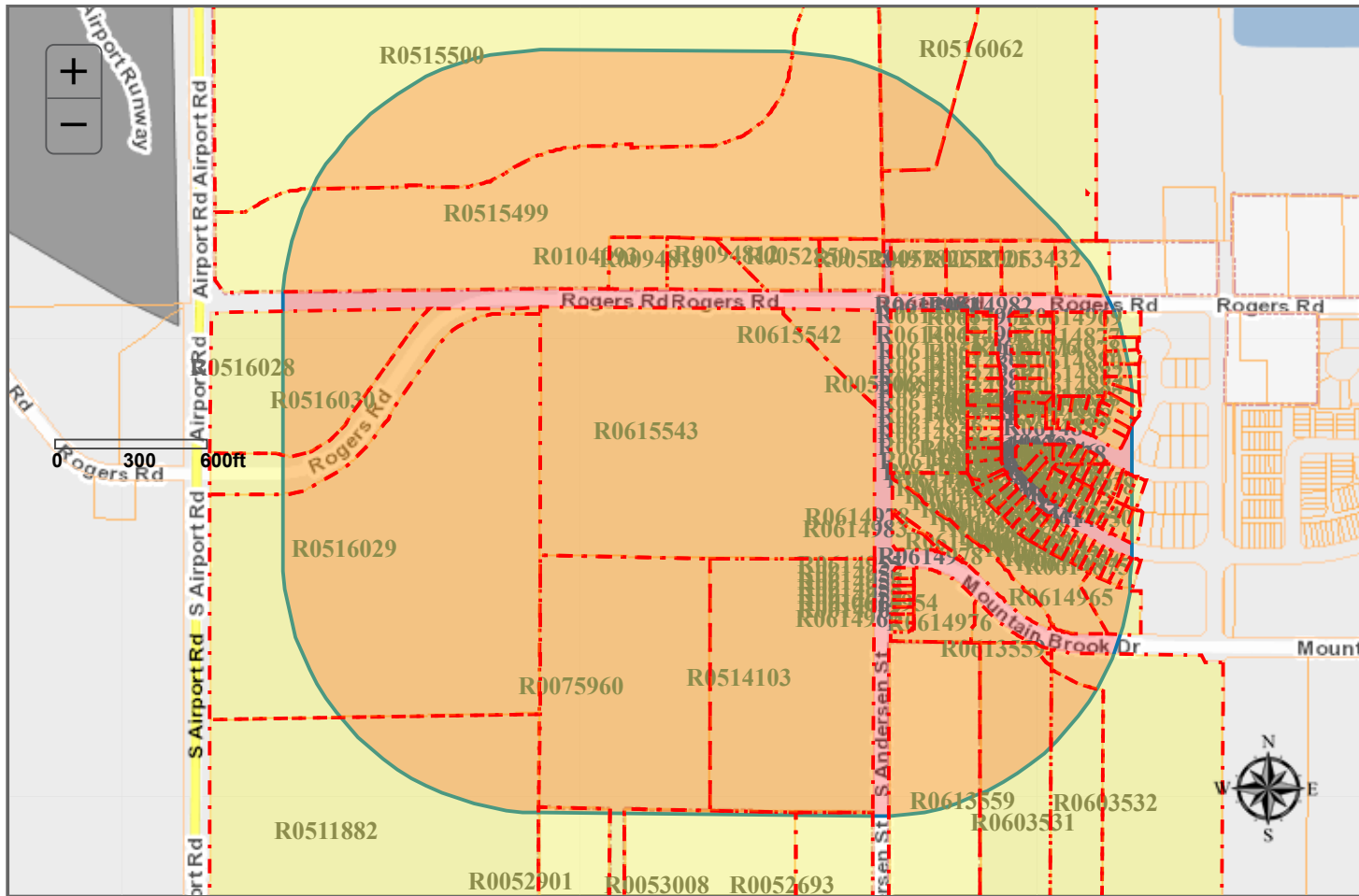
Jennifer Hewett-Apperson, Senior Planner
City of Longmont, Planning Division
303-651-8439
Jennifer.hewettapperson@longmontcolorado.gov

Project Vicinity Map



Report a different issue (<mailto:wdeoreo@bouldercounty.org>; dmcdermott@bouldercounty.org; kbknight@bouldercounty.org; mmullane@bouldercounty.org?
subject=Reporting an issue -- Property Search)

Return



Account	Owner	Mailing Address	Mail City	Mail State	Mail Zip	Site Address
R0511882	1313 INVESTMENTS LLC	650 S CHERRY ST STE 1400	DENVER	CO	80246 8601	NELSON RD
R0613559	ACE PROPERTY INVESTMENTS LLC	1800 DELAWARE PL UNIT 190	LONGMONT	CO	80501 3026	NELSON RD
R0613559	ACE PROPERTY INVESTMENTS LLC	1800 DELAWARE PL UNIT 190	LONGMONT	CO	80501 3024	NELSON RD
R0613559	ACE PROPERTY INVESTMENTS LLC	1800 DELAWARE PL UNIT 190	LONGMONT	CO	80501 3026	NELSON RD
R0613559	ACE PROPERTY INVESTMENTS LLC	1800 DELAWARE PL UNIT 190	LONGMONT	CO	80501 3024	NELSON RD
R0603532	ACTIS LLC	755 DELAWARE AVE SUITE A	LONGMONT	CO	80501 3002	NELSON RD
R0516028	AIRPORT PROP RE LLC	500 MCLENNAN ST	CLEARWATER	FL	33756 0	AIRPORT RD
R0516029	AIRPORT PROP RE LLC	500 MCLENNAN ST	CLEARWATER	FL	33756 0	AIRPORT RD
R0053008	ALLSHOUSE REVOCABLE TRUST	507 CHISHOLM WAY	BERTHOUD	CO	80513-9557 8809	NELSON RD
R0514103	ANDERSEN STORAGE LLC	251 LITTLE FALLS DR	WILMINGTON	DE	19808 451	S ANDERSEN ST
R0052822	ANDERSON EVAN W & KARLY	8953 ROGERS RD	LONGMONT	CO	80503-8561 8953	ROGERS RD
R0052893	BENSCHIEDT STEVEN E	8883 NELSON RD	LONGMONT	CO	80503-8546 8883	NELSON RD
R0616845	BERTELE KIMBERLY S	45 ACORN CREEK CT	LONGMONT	CO	80503 45	ACORN CREEK CT
R0614872	BORNEMEIER DIPIKA	2917 S FLAT CIR	LONGMONT	CO	80503-9072 2917	SOUTH FLAT CIR
R0614859	CAYCHO TERESA R	316 S ANDERSEN ST	LONGMONT	CO	80503 316	S ANDERSEN ST
R0603531	CBSS LLC	755 DELAWARE AVE STE A	LONGMONT	CO	80501 3002	NELSON RD
R0516030	CITY OF LONGMONT	350 KIMBARK ST	LONGMONT	CO	80501-5500 0	AIRPORT RD
R0515499	CITY OF LONGMONT	350 KIMBARK ST	LONGMONT	CO	80501-5500 8715	ROGERS RD
R0614878	CITY OF LONGMONT	350 KIMBARK ST	LONGMONT	CO	80501-5500 0	MOUNTAIN BROOK DR
R0614879	CITY OF LONGMONT	350 KIMBARK ST	LONGMONT	CO	80501-5500 0	MOUNTAIN BROOK DR
R0516064	CITY OF LONGMONT	350 KIMBARK ST	LONGMONT	CO	80501-5500 3290	ROGERS RD
R0614879	CITY OF LONGMONT	350 KIMBARK ST	LONGMONT	CO	80501-5500 0	MOUNTAIN BROOK DR
R0614878	CITY OF LONGMONT	350 KIMBARK ST	LONGMONT	CO	80501-5500 0	MOUNTAIN BROOK DR
R0614861	CORDOVA ALEXIS ET AL	324 S ANDERSEN ST	LONGMONT	CO	80503-9032 324	S ANDERSEN ST
R0515500	COUNTY OF BOULDER	5201 ST VRAIN RD BLDG 1	LONGMONT	CO	80503 10384	AIRPORT RD
R0614851	DFH MANDARIN LLC	2000 N CLAY ST	DENVER	CO	80211 2928	SOUTH FLAT CIR
R0614852	DFH MANDARIN LLC	2000 N CLAY ST	DENVER	CO	80211 2932	SOUTH FLAT CIR
R0614856	DFH MANDARIN LLC	14701 PHILLIPS HWY STE 300	JACKSONVILLE	FL	32256-3742 2985	SOUTH FLAT CIR
R0614851	DFH MANDARIN LLC	14701 PHILLIPS HWY STE 300	JACKSONVILLE	FL	32256-3742 3005	SOUTH FLAT CIR
R0616851	DFH MANDARIN LLC	14701 PHILLIPS HWY STE 300	JACKSONVILLE	FL	32256-3742 2941	BUFFALO FORK LN
R0614887	DFH MANDARIN LLC	14701 PHILLIPS HWY STE 300	JACKSONVILLE	FL	32256-3742 53	ACORN CREEK CT
R0616844	DFH MANDARIN LLC	14701 PHILLIPS HWY STE 300	JACKSONVILLE	FL	32256-3742 41	ACORN CREEK CT
R0614857	DFH MANDARIN LLC	14701 PHILLIPS HWY STE 300	JACKSONVILLE	FL	32256-3742 2981	SOUTH FLAT CIR
R0614888	DFH MANDARIN LLC	14701 PHILLIPS HWY STE 300	JACKSONVILLE	FL	32256-3742 57	ACORN CREEK CT
R0614874	DFH MANDARIN LLC	14701 PHILLIPS HWY STE 300	JACKSONVILLE	FL	32256-3742 2909	SOUTH FLAT CIR
R0614838	DFH MANDARIN LLC	14701 PHILLIPS HWY STE 300	JACKSONVILLE	FL	32256-3742 2925	BUFFALO FORK LN
R0053068	EVEN MICHAEL R TRUST	8918 ROGERS RD	LONGMONT	CO	80503-8563 8918	ROGERS RD
R0614837	FORBES CAROL FRIEDMAN	2929 BUFFALO FORK LN	LONGMONT	CO	80503-9049 2929	BUFFALO FORK LN
R0053380	FRONT RANGE REAL ESTATE PARTNERS LLC	1067 S HOVER RD STE E-113	LONGMONT	CO	80501-7904 8939	NELSON RD
R0052859	GORDON LINDA S	PO BOX 472	HYGIENE	CO	80533-0472 8877	ROGERS RD
R0614858	HABITAT FOR HUMANITY OF THE ST VRAIN VALLEY	PO BOX 333	LONGMONT	CO	80502-0333 312	S ANDERSEN ST
R0614855	HABITAT FOR HUMANITY OF THE ST VRAIN VALLEY	PO BOX 333	LONGMONT	CO	80502-0333 300	S ANDERSEN ST
R0614857	HABITAT FOR HUMANITY OF THE ST VRAIN VALLEY	PO BOX 333	LONGMONT	CO	80502-0333 308	S ANDERSEN ST

Account	Owner	Mailing Address	Mail City	Mail State	Mail Zip	Site Address
R0614956	HABITAT FOR HUMANITY OF THE ST VRAIN VALLEY	PO BOX 333	LONGMONT	CO	80502-0333	304 SANDERSEN ST
R0614886	HOLLAND JEFFREY B	1350 COLLEGE AVE 100	BOULDER	CO	80302 49	ACORN CREEK CT
R0094812	HYDE KEITH D & DARLENE M	8845 ROGERS RD	LONGMONT	CO	80503-8515	8845 ROGERS RD
R0052849	JACOBS GRANT A	8921 ROGER RD	LONGMONT	CO	80503-8561	8921 ROGERS RD
R0614877	JENSEN KADE ALEXANDER	29 ACORN CREEK CIR	LONGMONT	CO	80503 29	ACORN CREEK CT
R0094813	JONES DIANNE M	8811 ROGERS RD	LONGMONT	CO	80503 8811	ROGERS RD
R0052901	MCCLERY TAMARA R	8701 NELSON RD	LONGMONT	CO	80503 8701	NELSON RD
R0075860	MODERNWEST LONGMONT LLC	6185 BRIGADOON CT	LONGMONT	CO	80503-8897	3632 NELSON RD
R0615543	MODERNWEST LONGMONT LLC	6185 BRIGADOON CT	LONGMONT	CO	80503-8897	8876 ROGERS RD
R0614889	MOHAN PARMESH PUVADA ET AL	61 ACORN CREEK CIR	LONGMONT	CO	80503 61	ACORN CREEK CT
R0614864	MOUNTAIN BROOK METROPOLITAN DISTRICT	141 UNION BLVD STE 113	LAKEWOOD	CO	80228 3010	MOUNTAIN BROOK DR
R0614865	MOUNTAIN BROOK METROPOLITAN DISTRICT	141 UNION BLVD STE 113	LAKEWOOD	CO	80228 2920	MOUNTAIN BROOK DR
R0614881	MOUNTAIN BROOK METROPOLITAN DISTRICT	141 UNION BLVD STE 113	LAKEWOOD	CO	80228 0	ROGERS RD
R0614875	MOUNTAIN BROOK METROPOLITAN DISTRICT	141 UNION BLVD STE 113	LAKEWOOD	CO	80228 2936	SOUTH FLAT CIR
R0614883	MOUNTAIN BROOK METROPOLITAN DISTRICT	141 UNION BLVD STE 113	LAKEWOOD	CO	80228 0	MOUNTAIN BROOK DR
R0616853	MOUNTAIN BROOK METROPOLITAN DISTRICT	141 UNION BLVD STE 113	LAKEWOOD	CO	80228 2957	BUFFALO FORK LN
R0614863	MOUNTAIN BROOK METROPOLITAN DISTRICT	141 UNION BLVD STE 113	LAKEWOOD	CO	80228 2969	SOUTH FLAT CIR
R0614882	MOUNTAIN BROOK METROPOLITAN DISTRICT	141 UNION BLVD STE 113	LAKEWOOD	CO	80228 0	ROGERS RD
R0614876	MOUNTAIN BROOK METROPOLITAN DISTRICT	141 UNION BLVD STE 113	LAKEWOOD	CO	80228 0	MOUNTAIN BROOK DR
R0616854	MOUNTAIN BROOK METROPOLITAN DISTRICT	141 UNION BLVD STE 113	LAKEWOOD	CO	80228 25	ACORN CREEK CT
R0614832	MOUNTAIN BROOK PARTNERS LLC	700 KEN PRATT BLVD STE 113	LONGMONT	CO	80501 2944	SOUTH FLAT CIR
R0614852	MOUNTAIN BROOK PARTNERS LLC	700 KEN PRATT BLVD STE 113	LONGMONT	CO	80501 3001	SOUTH FLAT CIR
R0614802	MOUNTAIN BROOK PARTNERS LLC	700 KEN PRATT BLVD STE 113	LONGMONT	CO	80501 3000	SOUTH FLAT CIR
R0614870	MOUNTAIN BROOK PARTNERS LLC	700 KEN PRATT BLVD STE 113	LONGMONT	CO	80501 2925	SOUTH FLAT CIR
R0614850	MOUNTAIN BROOK PARTNERS LLC	700 KEN PRATT BLVD STE 113	LONGMONT	CO	80501 3009	SOUTH FLAT CIR
R0614836	MOUNTAIN BROOK PARTNERS LLC	700 KEN PRATT BLVD STE 113	LONGMONT	CO	80501 2960	SOUTH FLAT CIR
R0614834	MOUNTAIN BROOK PARTNERS LLC	700 KEN PRATT BLVD STE 113	LONGMONT	CO	80501 2952	SOUTH FLAT CIR
R0614833	MOUNTAIN BROOK PARTNERS LLC	700 KEN PRATT BLVD STE 113	LONGMONT	CO	80501 2948	SOUTH FLAT CIR
R0614895	MOUNTAIN BROOK PARTNERS LLC	700 KEN PRATT BLVD STE 113	LONGMONT	CO	80501 2972	SOUTH FLAT CIR
R0614866	MOUNTAIN BROOK PARTNERS LLC	700 KEN PRATT BLVD STE 113	LONGMONT	CO	80501 2941	SOUTH FLAT CIR
R0614896	MOUNTAIN BROOK PARTNERS LLC	700 KEN PRATT BLVD STE 113	LONGMONT	CO	80501 2976	SOUTH FLAT CIR
R0614863	MOUNTAIN BROOK PARTNERS LLC	700 KEN PRATT BLVD STE 113	LONGMONT	CO	80501 2953	SOUTH FLAT CIR
R0614830	MOUNTAIN BROOK PARTNERS LLC	700 KEN PRATT BLVD STE 113	LONGMONT	CO	80501 2933	BUFFALO FORK LN
R0614867	MOUNTAIN BROOK PARTNERS LLC	700 KEN PRATT BLVD STE 113	LONGMONT	CO	80501 2937	SOUTH FLAT CIR
R0614849	MOUNTAIN BROOK PARTNERS LLC	700 KEN PRATT BLVD STE 113	LONGMONT	CO	80501 3013	SOUTH FLAT CIR
R0614892	MOUNTAIN BROOK PARTNERS LLC	700 KEN PRATT BLVD STE 113	LONGMONT	CO	80501 2934	BUFFALO FORK LN
R0614819	MOUNTAIN BROOK PARTNERS LLC	700 KEN PRATT BLVD STE 113	LONGMONT	CO	80501 2964	SOUTH FLAT CIR
R0614861	MOUNTAIN BROOK PARTNERS LLC	700 KEN PRATT BLVD STE 113	LONGMONT	CO	80501 2961	SOUTH FLAT CIR
R0614835	MOUNTAIN BROOK PARTNERS LLC	700 KEN PRATT BLVD STE 113	LONGMONT	CO	80501 2956	SOUTH FLAT CIR
R0616849	MOUNTAIN BROOK PARTNERS LLC	700 KEN PRATT BLVD STE 113	LONGMONT	CO	80501 2949	BUFFALO FORK LN
R0614854	MOUNTAIN BROOK PARTNERS LLC	700 KEN PRATT BLVD STE 113	LONGMONT	CO	80501 2993	SOUTH FLAT CIR
R0614855	MOUNTAIN BROOK PARTNERS LLC	700 KEN PRATT BLVD STE 113	LONGMONT	CO	80501 2989	SOUTH FLAT CIR
R0614891	MOUNTAIN BROOK PARTNERS LLC	700 KEN PRATT BLVD STE 113	LONGMONT	CO	80501 2930	BUFFALO FORK LN

Account	Owner	Mailing Address	Mail City	Mail State	Mail Zip	Site Address
R0614858	MOUNTAIN BROOK PARTNERS LLC	700 KEN PRATT BLVD STE 113	LONGMONT	CO	80501 2977	SOUTH FLAT CIR
R0614853	MOUNTAIN BROOK PARTNERS LLC	700 KEN PRATT BLVD STE 113	LONGMONT	CO	80501 2997	SOUTH FLAT CIR
R0614890	MOUNTAIN BROOK PARTNERS LLC	700 KEN PRATT BLVD STE 113	LONGMONT	CO	80501 2926	BUFFALO FORK LN
R0614859	MOUNTAIN BROOK PARTNERS LLC	700 KEN PRATT BLVD STE 113	LONGMONT	CO	80501 2973	SOUTH FLAT CIR
R0614931	MOUNTAIN BROOK PARTNERS LLC	700 KEN PRATT BLVD STE 113	LONGMONT	CO	80501 2940	SOUTH FLAT CIR
R0614869	MOUNTAIN BROOK PARTNERS LLC	700 KEN PRATT BLVD STE 113	LONGMONT	CO	80501 2929	SOUTH FLAT CIR
R0616848	MOUNTAIN BROOK PARTNERS LLC	700 KEN PRATT BLVD STE 113	LONGMONT	CO	80501 2953	BUFFALO FORK LN
R0614901	MOUNTAIN BROOK PARTNERS LLC	700 KEN PRATT BLVD STE 113	LONGMONT	CO	80501 2996	SOUTH FLAT CIR
R0614899	MOUNTAIN BROOK PARTNERS LLC	700 KEN PRATT BLVD STE 113	LONGMONT	CO	80501 2988	SOUTH FLAT CIR
R0614898	MOUNTAIN BROOK PARTNERS LLC	700 KEN PRATT BLVD STE 113	LONGMONT	CO	80501 2984	SOUTH FLAT CIR
R0614918	MOUNTAIN BROOK PARTNERS LLC	700 KEN PRATT BLVD STE 113	LONGMONT	CO	80501 2968	SOUTH FLAT CIR
R0614897	MOUNTAIN BROOK PARTNERS LLC	700 KEN PRATT BLVD STE 113	LONGMONT	CO	80501 2980	SOUTH FLAT CIR
R0614848	MOUNTAIN BROOK PARTNERS LLC	700 KEN PRATT BLVD STE 113	LONGMONT	CO	80501 3017	SOUTH FLAT CIR
R0614900	MOUNTAIN BROOK PARTNERS LLC	700 KEN PRATT BLVD STE 113	LONGMONT	CO	80501 2992	SOUTH FLAT CIR
R0614864	MOUNTAIN BROOK PARTNERS LLC	700 KEN PRATT BLVD STE 113	LONGMONT	CO	80501 2949	SOUTH FLAT CIR
R0614868	MOUNTAIN BROOK PARTNERS LLC	700 KEN PRATT BLVD STE 113	LONGMONT	CO	80501 2933	SOUTH FLAT CIR
R0614860	MOUNTAIN BROOK PARTNERS LLC	700 KEN PRATT BLVD STE 113	LONGMONT	CO	80501 2965	SOUTH FLAT CIR
R0614862	MOUNTAIN BROOK PARTNERS LLC	700 KEN PRATT BLVD STE 113	LONGMONT	CO	80501 2957	SOUTH FLAT CIR
R0614865	MOUNTAIN BROOK PARTNERS LLC	700 KEN PRATT BLVD STE 113	LONGMONT	CO	80501 2945	SOUTH FLAT CIR
R0616846	MOUNTAIN BROOK PARTNERS LLC	700 KEN PRATT BLVD STE 113	LONGMONT	CO	80501 2938	BUFFALO FORK LN
R0104093	MURPHEY JAMES PATRICK	1017 S BLACK AVE	BOZEMAN	MT	59715 8769	ROGERS RD
R0614960	PADILLA PATRICIA	320 S ANDERSEN ST	LONGMONT	CO	80503-9032 320	S ANDERSEN ST
R0616850	PERRY JENNIFER & DYLAN	2945 BUFFALO FORK LN	LONGMONT	CO	80503-9049 2945	BUFFALO FORK LN
R0614962	QUIROZ KAREN	328 S ANDERSEN ST	LONGMONT	CO	80503 328	S ANDERSEN ST
R0616852	RIESZ DAVID B & ALICIA L REDDISH	2937 BUFFALO FORK LN	LONGMONT	CO	80503 2937	BUFFALO FORK LN
R0614875	SHOOK THOMAS	2905 SOUTH FLAT CIR	LONGMONT	CO	80503 2905	SOUTH FLAT CIR
R0616843	SHUKLA GAURAV & PRIYANKA SHARMA	2727 NELSON RD J103	LONGMONT	CO	80503 37	ACORN CREEK CT
R0052721	SMITH ROBERT TRISTRAM & TRACY LEE	8985 ROGERS RD	LONGMONT	CO	80503-8561 8985	ROGERS RD
R0614873	SPENCER KEN LLOYD	2913 S FLAT CIR	LONGMONT	CO	80503-9072 2913	SOUTH FLAT CIR
R0614950	STROUP TIMOTHY & GRACE SINDT	9162 W BELMONT AVE	LITTLETON	CO	80123 2924	SOUTH FLAT CIR
M8901067	TERHAAR PAUL H	735 ROBERT ST	LONGMONT	CO	80503-9442 8939	NELSON RD
R0614876	TRUNCK STEPHEN P & PATRICIA E	9020 W ROGERS RD	LONGMONT	CO	80501-8563 9020	W ROGERS RD
R0053432	VANDEHOEF RAYMOND L & ELIZABETH ANNE	9017 ROGERS RD	LONGMONT	CO	80503-8561 9017	ROGERS RD
R0614954	VETERANS COMMUNITY PROJECT	8900 THOOST AVE	KANSAS CITY	MO	64131 3095	MOUNTAIN BROOK DR
R0616841	VIG DEVON & ANDREW	33 ACORN CREEK CT	LONGMONT	CO	80503 33	ACORN CREEK CT
R0616062	WV GOLDEN FOUNDATION INC ET AL	2045 LONGS PEAK AVE	LONGMONT	CO	80501 0	ROGERS RD
R0615542	WILLIAMS MARTHA A & LESLIE J JR	8876 ROGERS RD	LONGMONT	CO	80503-8500 8876	ROGERS RD
R0614871	WILSON SCOTT A & JILL G	2921 SOUTH FLAT CIR	LONGMONT	CO	80503 2921	SOUTH FLAT CIR



CITY OF LONGMONT | Planning Division

Certificate of Property Posting

I, Amy Bartel, certify that 1 sign(s) was/were posted pursuant to the provisions of the City of Longmont Land Development Code, for the application identified as

ModernWest 2

Project Name

for a

☒ Neighborhood Meeting

☐ Notice of Application

☐ Planning and Zoning Commission Public Hearing to be held on _____

☐ City Council Public Hearing to be held on _____

On the subject property located at

Southwest intersection of Rogers Road and Andersen Street

Site Address or Location Description

Attach photo(s) of posting on second page below (use additional pages if necessary):



I certify that the foregoing information is true and correct.

ay Bud
Signature

1/25/2023

Date

Application Under Review



CITY OF LONGMONT | Planning and Development Services

March 28, 2023

Notice of Application

ModernWest Parcel 2 Concept Plan Amendment

(Project File DV-CONCEPT PLAN-23-00005)

Proposal:	ModernWest Parcel 2 Concept Plan Amendment to incorporate land uses in the MU-E Zone, approximately 27.25 acres north of Mountain Brook Drive and south of Rogers Road
Location:	8876 ROGERS RD
Area:	27.25 acres
Existing Use:	undeveloped
Zoning:	Mixed Use – Employment (MU-E)
Property Owner:	LOT 2 ROGERS ROAD LLC
Applicant:	ModernWest

Any person having an interest in the above application may call or email the Planning Division for more information and to obtain electronic copies of the application materials. With an appointment, any interested party may review the paper application materials on file at the Planning Division, City of Longmont, Development Services Center, 385 Kimbark Street, Longmont, CO 80501.

If you are interested in submitting written comments to the City for consideration, we ask that you kindly submit written comments no later than 04/14/2023 so that city staff can review comments and feedback prior to completing an analysis of this application.

Applicant Contact:

Derek Guarascio
ModernWest
6185 Brigadoon Ct
Longmont, CO 80503

303-717-5309

derek@modernwestcolorado.com

City Staff Planner:

Jennifer Hewett-Apperson

(303) 651-8439

jennifer.hewettapperson@longmontcolorado.gov

The Planning Division has received and initiated review of the following application. Public hearings before the Planning and Zoning Commission and/or City Council will be held at dates to be determined.

(<https://www.bouldercounty.org>)

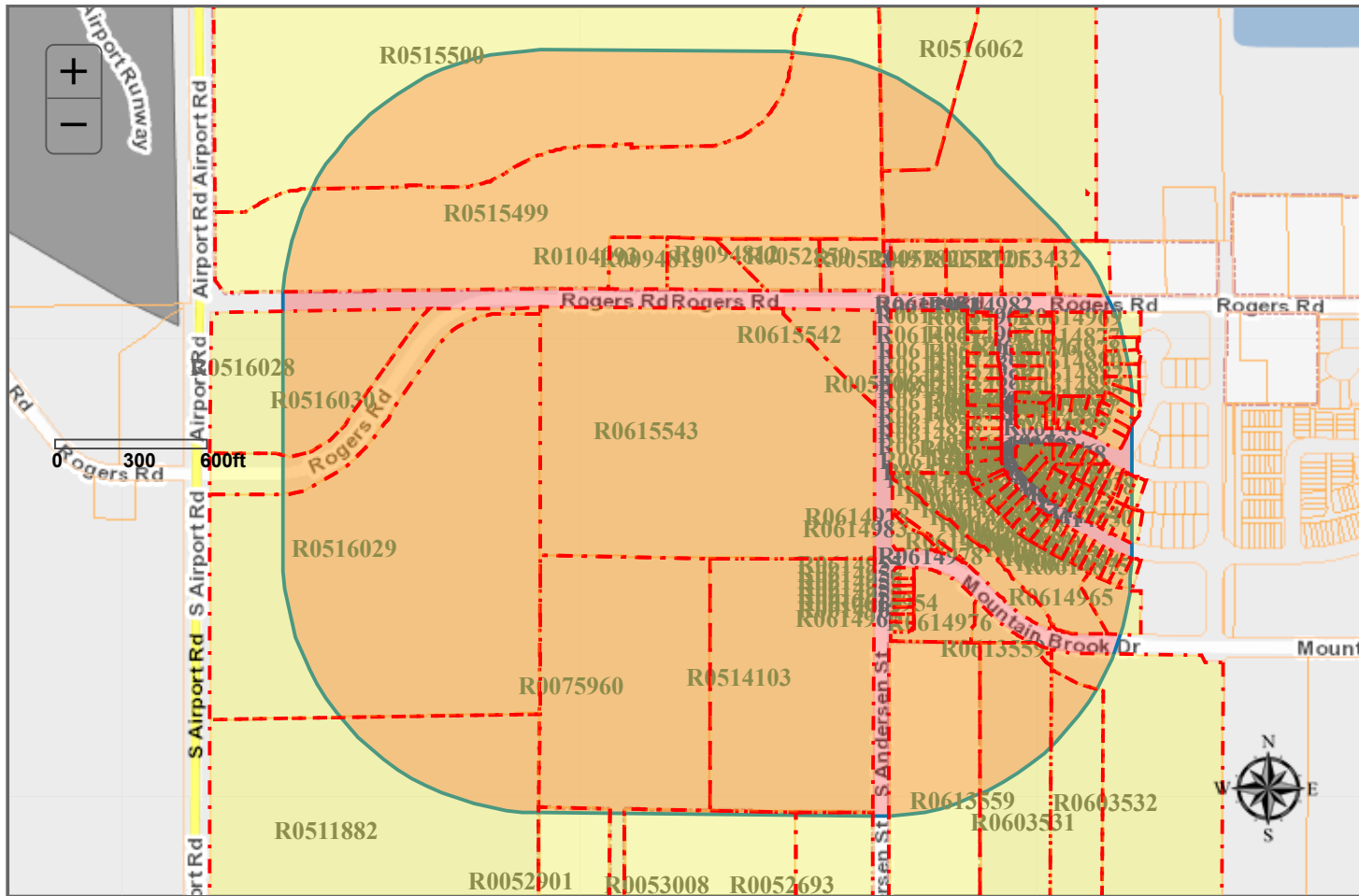
Name or address wrong? (<https://www.bouldercounty.org/property-and-land/treasurer/taxes/change-address/>)

Report a different issue (<mailto:wdeoreo@bouldercounty.org>; dmcdermott@bouldercounty.org; kbknight@bouldercounty.org; mmullane@bouldercounty.org?

subject=Reporting an issue -- Property Search)

Property Search

Return



Account	Owner	Mailing Address	Mail City	Mail State	Mail Zip	Site Address
R0511882	1313 INVESTMENTS LLC	650 S CHERRY ST STE 1400	DENVER	CO	80246 8601	NELSON RD
R0613559	ACE PROPERTY INVESTMENTS LLC	1800 DELAWARE PL UNIT 190	LONGMONT	CO	80501 3026	NELSON RD
R0613559	ACE PROPERTY INVESTMENTS LLC	1800 DELAWARE PL UNIT 190	LONGMONT	CO	80501 3024	NELSON RD
R0613559	ACE PROPERTY INVESTMENTS LLC	1800 DELAWARE PL UNIT 190	LONGMONT	CO	80501 3026	NELSON RD
R0613559	ACE PROPERTY INVESTMENTS LLC	1800 DELAWARE PL UNIT 190	LONGMONT	CO	80501 3024	NELSON RD
R0603532	ACTIS LLC	755 DELAWARE AVE SUITE A	LONGMONT	CO	80501 3002	NELSON RD
R0516028	AIRPORT PROP RE LLC	500 MCLENNAN ST	CLEARWATER	FL	33756 0	AIRPORT RD
R0516029	AIRPORT PROP RE LLC	500 MCLENNAN ST	CLEARWATER	FL	33756 0	AIRPORT RD
R0053008	ALLSHOUSE REVOCABLE TRUST	507 CHISHOLM WAY	BERTHOUD	CO	80513-9557 8809	NELSON RD
R0514103	ANDERSEN STORAGE LLC	251 LITTLE FALLS DR	WILMINGTON	DE	19808 451	S ANDERSEN ST
R0052822	ANDERSON EVAN W & KARLY	8953 ROGERS RD	LONGMONT	CO	80503-8561 8953	ROGERS RD
R0052893	BENSCHIEDT STEVEN E	8883 NELSON RD	LONGMONT	CO	80503-8546 8883	NELSON RD
R0616845	BERTELE KIMBERLY S	45 ACORN CREEK CT	LONGMONT	CO	80503 45	ACORN CREEK CT
R0614872	BORNEMEIER DIPIKA	2917 S FLAT CIR	LONGMONT	CO	80503-9072 2917	SOUTH FLAT CIR
R0614859	CAYCHO TERESA R	316 S ANDERSEN ST	LONGMONT	CO	80503 316	S ANDERSEN ST
R0603531	CBSS LLC	755 DELAWARE AVE STE A	LONGMONT	CO	80501 3002	NELSON RD
R0516030	CITY OF LONGMONT	350 KIMBARK ST	LONGMONT	CO	80501-5500 0	AIRPORT RD
R0515499	CITY OF LONGMONT	350 KIMBARK ST	LONGMONT	CO	80501-5500 8715	ROGERS RD
R0614878	CITY OF LONGMONT	350 KIMBARK ST	LONGMONT	CO	80501-5500 0	MOUNTAIN BROOK DR
R0614879	CITY OF LONGMONT	350 KIMBARK ST	LONGMONT	CO	80501-5500 0	MOUNTAIN BROOK DR
R0516064	CITY OF LONGMONT	350 KIMBARK ST	LONGMONT	CO	80501-5500 3290	ROGERS RD
R0614879	CITY OF LONGMONT	350 KIMBARK ST	LONGMONT	CO	80501-5500 0	MOUNTAIN BROOK DR
R0614878	CITY OF LONGMONT	350 KIMBARK ST	LONGMONT	CO	80501-5500 0	MOUNTAIN BROOK DR
R0614861	CORDOVA ALEXIS ET AL	324 S ANDERSEN ST	LONGMONT	CO	80503-9032 324	S ANDERSEN ST
R0515500	COUNTY OF BOULDER	5201 ST VRAIN RD BLDG 1	LONGMONT	CO	80503 10384	AIRPORT RD
R0614851	DFH MANDARIN LLC	2000 N CLAY ST	DENVER	CO	80211 2928	SOUTH FLAT CIR
R0614852	DFH MANDARIN LLC	2000 N CLAY ST	DENVER	CO	80211 2932	SOUTH FLAT CIR
R0614856	DFH MANDARIN LLC	14701 PHILLIPS HWY STE 300	JACKSONVILLE	FL	32256-3742 2985	SOUTH FLAT CIR
R0614851	DFH MANDARIN LLC	14701 PHILLIPS HWY STE 300	JACKSONVILLE	FL	32256-3742 3005	SOUTH FLAT CIR
R0616851	DFH MANDARIN LLC	14701 PHILLIPS HWY STE 300	JACKSONVILLE	FL	32256-3742 2941	BUFFALO FORK LN
R0614887	DFH MANDARIN LLC	14701 PHILLIPS HWY STE 300	JACKSONVILLE	FL	32256-3742 53	ACORN CREEK CT
R0616844	DFH MANDARIN LLC	14701 PHILLIPS HWY STE 300	JACKSONVILLE	FL	32256-3742 41	ACORN CREEK CT
R0614857	DFH MANDARIN LLC	14701 PHILLIPS HWY STE 300	JACKSONVILLE	FL	32256-3742 2981	SOUTH FLAT CIR
R0614888	DFH MANDARIN LLC	14701 PHILLIPS HWY STE 300	JACKSONVILLE	FL	32256-3742 57	ACORN CREEK CT
R0614874	DFH MANDARIN LLC	14701 PHILLIPS HWY STE 300	JACKSONVILLE	FL	32256-3742 2909	SOUTH FLAT CIR
R0614838	DFH MANDARIN LLC	14701 PHILLIPS HWY STE 300	JACKSONVILLE	FL	32256-3742 2925	BUFFALO FORK LN
R0053068	EVEN MICHAEL R TRUST	8918 ROGERS RD	LONGMONT	CO	80503-8563 8918	ROGERS RD
R0614837	FORBES CAROL FRIEDMAN	2929 BUFFALO FORK LN	LONGMONT	CO	80503-9049 2929	BUFFALO FORK LN
R0053380	FRONT RANGE REAL ESTATE PARTNERS LLC	1067 S HOVER RD STE E-113	LONGMONT	CO	80501-7904 8939	NELSON RD
R0052859	GORDON LINDA S	PO BOX 472	HYGIENE	CO	80533-0472 8877	ROGERS RD
R0614858	HABITAT FOR HUMANITY OF THE ST VRAIN VALLEY	PO BOX 333	LONGMONT	CO	80502-0333 312	S ANDERSEN ST
R0614855	HABITAT FOR HUMANITY OF THE ST VRAIN VALLEY	PO BOX 333	LONGMONT	CO	80502-0333 300	S ANDERSEN ST
R0614857	HABITAT FOR HUMANITY OF THE ST VRAIN VALLEY	PO BOX 333	LONGMONT	CO	80502-0333 308	S ANDERSEN ST

Account	Owner	Mailing Address	Mail City	Mail State	Mail Zip	Site Address
R0614956	HABITAT FOR HUMANITY OF THE ST VRAIN VALLEY	PO BOX 333	LONGMONT	CO	80502-0333	304 SANDERSEN ST
R0614886	HOLLAND JEFFREY B	1350 COLLEGE AVE 100	BOULDER	CO	80302 49	ACORN CREEK CT
R0094812	HYDE KEITH D & DARLENE M	8845 ROGERS RD	LONGMONT	CO	80503-8515	8845 ROGERS RD
R0052849	JACOBS GRANT A	8921 ROGER RD	LONGMONT	CO	80503-8561	8921 ROGERS RD
R0614877	JENSEN KADE ALEXANDER	29 ACORN CREEK CIR	LONGMONT	CO	80503 29	ACORN CREEK CT
R0094813	JONES DIANNE M	8811 ROGERS RD	LONGMONT	CO	80503 8811	ROGERS RD
R0052901	MCCLERY TAMARA R	8701 NELSON RD	LONGMONT	CO	80503 8701	NELSON RD
R0075860	MODERNWEST LONGMONT LLC	6185 BRIGADOON CT	LONGMONT	CO	80503-8897	3632 NELSON RD
R0615543	MODERNWEST LONGMONT LLC	6185 BRIGADOON CT	LONGMONT	CO	80503-8897	8876 ROGERS RD
R0614889	MOHAN PARMESH PUVADA ET AL	61 ACORN CREEK CIR	LONGMONT	CO	80503 61	ACORN CREEK CT
R0614864	MOUNTAIN BROOK METROPOLITAN DISTRICT	141 UNION BLVD STE 113	LAKEWOOD	CO	80228 3010	MOUNTAIN BROOK DR
R0614865	MOUNTAIN BROOK METROPOLITAN DISTRICT	141 UNION BLVD STE 113	LAKEWOOD	CO	80228 2920	MOUNTAIN BROOK DR
R0614881	MOUNTAIN BROOK METROPOLITAN DISTRICT	141 UNION BLVD STE 113	LAKEWOOD	CO	80228 0	ROGERS RD
R0614875	MOUNTAIN BROOK METROPOLITAN DISTRICT	141 UNION BLVD STE 113	LAKEWOOD	CO	80228 2936	SOUTH FLAT CIR
R0614883	MOUNTAIN BROOK METROPOLITAN DISTRICT	141 UNION BLVD STE 113	LAKEWOOD	CO	80228 0	MOUNTAIN BROOK DR
R0616853	MOUNTAIN BROOK METROPOLITAN DISTRICT	141 UNION BLVD STE 113	LAKEWOOD	CO	80228 2957	BUFFALO FORK LN
R0614863	MOUNTAIN BROOK METROPOLITAN DISTRICT	141 UNION BLVD STE 113	LAKEWOOD	CO	80228 2969	SOUTH FLAT CIR
R0614882	MOUNTAIN BROOK METROPOLITAN DISTRICT	141 UNION BLVD STE 113	LAKEWOOD	CO	80228 0	ROGERS RD
R0614876	MOUNTAIN BROOK METROPOLITAN DISTRICT	141 UNION BLVD STE 113	LAKEWOOD	CO	80228 0	MOUNTAIN BROOK DR
R0616854	MOUNTAIN BROOK METROPOLITAN DISTRICT	141 UNION BLVD STE 113	LAKEWOOD	CO	80228 25	ACORN CREEK CT
R0614832	MOUNTAIN BROOK PARTNERS LLC	700 KEN PRATT BLVD STE 113	LONGMONT	CO	80501 2944	SOUTH FLAT CIR
R0614852	MOUNTAIN BROOK PARTNERS LLC	700 KEN PRATT BLVD STE 113	LONGMONT	CO	80501 3001	SOUTH FLAT CIR
R0614802	MOUNTAIN BROOK PARTNERS LLC	700 KEN PRATT BLVD STE 113	LONGMONT	CO	80501 3000	SOUTH FLAT CIR
R0614870	MOUNTAIN BROOK PARTNERS LLC	700 KEN PRATT BLVD STE 113	LONGMONT	CO	80501 2925	SOUTH FLAT CIR
R0614850	MOUNTAIN BROOK PARTNERS LLC	700 KEN PRATT BLVD STE 113	LONGMONT	CO	80501 3009	SOUTH FLAT CIR
R0614836	MOUNTAIN BROOK PARTNERS LLC	700 KEN PRATT BLVD STE 113	LONGMONT	CO	80501 2960	SOUTH FLAT CIR
R0614834	MOUNTAIN BROOK PARTNERS LLC	700 KEN PRATT BLVD STE 113	LONGMONT	CO	80501 2952	SOUTH FLAT CIR
R0614833	MOUNTAIN BROOK PARTNERS LLC	700 KEN PRATT BLVD STE 113	LONGMONT	CO	80501 2948	SOUTH FLAT CIR
R0614895	MOUNTAIN BROOK PARTNERS LLC	700 KEN PRATT BLVD STE 113	LONGMONT	CO	80501 2972	SOUTH FLAT CIR
R0614866	MOUNTAIN BROOK PARTNERS LLC	700 KEN PRATT BLVD STE 113	LONGMONT	CO	80501 2941	SOUTH FLAT CIR
R0614896	MOUNTAIN BROOK PARTNERS LLC	700 KEN PRATT BLVD STE 113	LONGMONT	CO	80501 2976	SOUTH FLAT CIR
R0614863	MOUNTAIN BROOK PARTNERS LLC	700 KEN PRATT BLVD STE 113	LONGMONT	CO	80501 2953	SOUTH FLAT CIR
R0614830	MOUNTAIN BROOK PARTNERS LLC	700 KEN PRATT BLVD STE 113	LONGMONT	CO	80501 2933	BUFFALO FORK LN
R0614867	MOUNTAIN BROOK PARTNERS LLC	700 KEN PRATT BLVD STE 113	LONGMONT	CO	80501 2937	SOUTH FLAT CIR
R0614849	MOUNTAIN BROOK PARTNERS LLC	700 KEN PRATT BLVD STE 113	LONGMONT	CO	80501 3013	SOUTH FLAT CIR
R0614892	MOUNTAIN BROOK PARTNERS LLC	700 KEN PRATT BLVD STE 113	LONGMONT	CO	80501 2934	BUFFALO FORK LN
R0614819	MOUNTAIN BROOK PARTNERS LLC	700 KEN PRATT BLVD STE 113	LONGMONT	CO	80501 2964	SOUTH FLAT CIR
R0614861	MOUNTAIN BROOK PARTNERS LLC	700 KEN PRATT BLVD STE 113	LONGMONT	CO	80501 2961	SOUTH FLAT CIR
R0614835	MOUNTAIN BROOK PARTNERS LLC	700 KEN PRATT BLVD STE 113	LONGMONT	CO	80501 2956	SOUTH FLAT CIR
R0616849	MOUNTAIN BROOK PARTNERS LLC	700 KEN PRATT BLVD STE 113	LONGMONT	CO	80501 2949	BUFFALO FORK LN
R0614854	MOUNTAIN BROOK PARTNERS LLC	700 KEN PRATT BLVD STE 113	LONGMONT	CO	80501 2993	SOUTH FLAT CIR
R0614855	MOUNTAIN BROOK PARTNERS LLC	700 KEN PRATT BLVD STE 113	LONGMONT	CO	80501 2989	SOUTH FLAT CIR
R0614891	MOUNTAIN BROOK PARTNERS LLC	700 KEN PRATT BLVD STE 113	LONGMONT	CO	80501 2930	BUFFALO FORK LN

Account	Owner	Mailing Address	Mail City	Mail State	Mail Zip	Site Address
R0614858	MOUNTAIN BROOK PARTNERS LLC	700 KEN PRATT BLVD STE 113	LONGMONT	CO	80501 2977	SOUTH FLAT CIR
R0614853	MOUNTAIN BROOK PARTNERS LLC	700 KEN PRATT BLVD STE 113	LONGMONT	CO	80501 2997	SOUTH FLAT CIR
R0614890	MOUNTAIN BROOK PARTNERS LLC	700 KEN PRATT BLVD STE 113	LONGMONT	CO	80501 2926	BUFFALO FORK LN
R0614859	MOUNTAIN BROOK PARTNERS LLC	700 KEN PRATT BLVD STE 113	LONGMONT	CO	80501 2973	SOUTH FLAT CIR
R0614931	MOUNTAIN BROOK PARTNERS LLC	700 KEN PRATT BLVD STE 113	LONGMONT	CO	80501 2940	SOUTH FLAT CIR
R0614869	MOUNTAIN BROOK PARTNERS LLC	700 KEN PRATT BLVD STE 113	LONGMONT	CO	80501 2929	SOUTH FLAT CIR
R0616848	MOUNTAIN BROOK PARTNERS LLC	700 KEN PRATT BLVD STE 113	LONGMONT	CO	80501 2953	BUFFALO FORK LN
R0614901	MOUNTAIN BROOK PARTNERS LLC	700 KEN PRATT BLVD STE 113	LONGMONT	CO	80501 2996	SOUTH FLAT CIR
R0614899	MOUNTAIN BROOK PARTNERS LLC	700 KEN PRATT BLVD STE 113	LONGMONT	CO	80501 2988	SOUTH FLAT CIR
R0614898	MOUNTAIN BROOK PARTNERS LLC	700 KEN PRATT BLVD STE 113	LONGMONT	CO	80501 2984	SOUTH FLAT CIR
R0614918	MOUNTAIN BROOK PARTNERS LLC	700 KEN PRATT BLVD STE 113	LONGMONT	CO	80501 2968	SOUTH FLAT CIR
R0614897	MOUNTAIN BROOK PARTNERS LLC	700 KEN PRATT BLVD STE 113	LONGMONT	CO	80501 2980	SOUTH FLAT CIR
R0614848	MOUNTAIN BROOK PARTNERS LLC	700 KEN PRATT BLVD STE 113	LONGMONT	CO	80501 3017	SOUTH FLAT CIR
R0614900	MOUNTAIN BROOK PARTNERS LLC	700 KEN PRATT BLVD STE 113	LONGMONT	CO	80501 2992	SOUTH FLAT CIR
R0614864	MOUNTAIN BROOK PARTNERS LLC	700 KEN PRATT BLVD STE 113	LONGMONT	CO	80501 2949	SOUTH FLAT CIR
R0614868	MOUNTAIN BROOK PARTNERS LLC	700 KEN PRATT BLVD STE 113	LONGMONT	CO	80501 2933	SOUTH FLAT CIR
R0614860	MOUNTAIN BROOK PARTNERS LLC	700 KEN PRATT BLVD STE 113	LONGMONT	CO	80501 2965	SOUTH FLAT CIR
R0614862	MOUNTAIN BROOK PARTNERS LLC	700 KEN PRATT BLVD STE 113	LONGMONT	CO	80501 2957	SOUTH FLAT CIR
R0614865	MOUNTAIN BROOK PARTNERS LLC	700 KEN PRATT BLVD STE 113	LONGMONT	CO	80501 2945	SOUTH FLAT CIR
R0616846	MOUNTAIN BROOK PARTNERS LLC	700 KEN PRATT BLVD STE 113	LONGMONT	CO	80501 2938	BUFFALO FORK LN
R0104093	MURPHEY JAMES PATRICK	1017 S BLACK AVE	BOZEMAN	MT	59715 8769	ROGERS RD
R0614960	PADILLA PATRICIA	320 S ANDERSEN ST	LONGMONT	CO	80503-9032 320	S ANDERSEN ST
R0616850	PERRY JENNIFER & DYLAN	2945 BUFFALO FORK LN	LONGMONT	CO	80503-9049 2945	BUFFALO FORK LN
R0614962	QUIROZ KAREN	328 S ANDERSEN ST	LONGMONT	CO	80503 328	S ANDERSEN ST
R0616852	RIESZ DAVID B & ALICIA L REDDISH	2937 BUFFALO FORK LN	LONGMONT	CO	80503 2937	BUFFALO FORK LN
R0614875	SHOOK THOMAS	2905 SOUTH FLAT CIR	LONGMONT	CO	80503 2905	SOUTH FLAT CIR
R0616843	SHUKLA GAURAV & PRIYANKA SHARMA	2727 NELSON RD J103	LONGMONT	CO	80503 37	ACORN CREEK CT
R0052721	SMITH ROBERT TRISTRAM & TRACY LEE	8985 ROGERS RD	LONGMONT	CO	80503-8561 8985	ROGERS RD
R0614873	SPENCER KEN LLOYD	2913 S FLAT CIR	LONGMONT	CO	80503-9072 2913	SOUTH FLAT CIR
R0614950	STROUP TIMOTHY & GRACE SINDT	9162 W BELMONT AVE	LITTLETON	CO	80123 2924	SOUTH FLAT CIR
M8901067	TERHAAR PAUL H	735 ROBERT ST	LONGMONT	CO	80503-9442 8939	NELSON RD
R0614876	TRUNCK STEPHEN P & PATRICIA E	9020 W ROGERS RD	LONGMONT	CO	80501-8563 9020	W ROGERS RD
R0053432	VANDEHOEF RAYMOND L & ELIZABETH ANNE	9017 ROGERS RD	LONGMONT	CO	80503-8561 9017	ROGERS RD
R0614954	VETERANS COMMUNITY PROJECT	8900 THOOST AVE	KANSAS CITY	MO	64131 3095	MOUNTAIN BROOK DR
R0616841	VIG DEVON & ANDREW	33 ACORN CREEK CT	LONGMONT	CO	80503 33	ACORN CREEK CT
R0616062	WV GOLDEN FOUNDATION INC ET AL	2045 LONGS PEAK AVE	LONGMONT	CO	80501 0	ROGERS RD
R0615542	WILLIAMS MARTHA A & LESLIE J JR	8876 ROGERS RD	LONGMONT	CO	80503-8500 8876	ROGERS RD
R0614871	WILSON SCOTT A & JILL G	2921 SOUTH FLAT CIR	LONGMONT	CO	80503 2921	SOUTH FLAT CIR

Public Hearing



CITY OF LONGMONT | Planning Division

Certificate of Property Posting

I, Amy Bartel, certify that 1 sign(s) was/were posted pursuant to the provisions of the City of Longmont Land Development Code, for the application identified as

ModernWest 2

Project Name

for a

 Neighborhood Meeting

 Notice of Application

 X Planning and Zoning Commission Public Hearing to be held on June 26, 2024

 City Council Public Hearing to be held on

On the subject property located at

South side of Rogers Rd between Airport Rd and a future extension of S. Andersen

Site Address or Location Description

Attach photo(s) of posting on second page below (use additional pages if necessary):



I certify that the foregoing information is true and correct.

ay Bond

Signature

6/7/2024

Date

Development Proposal Public Hearing



ModernWest 2

Project Name

Concept Plan Amendment

Application Type

June 26, 2024, 7:00PM, Council Chambers

Making Your Time and Location
To submit comments or obtain information contact:

303.651.8330 | longmontcolorado.gov
City of Longmont Planning & Development
Jennifer Hewett Appertson

longmontcolorado.gov

1000 Oak Street

Development Proposal Public Hearing



ModernWest 2

Project Name

Concept Plan Amendment

Application Type

June 26, 2024, 7:00PM, Council Chambers

Meeting Date, Time and Location

To submit comments or obtain information contact: Jennifer Hewett-Apperson

03.651.8330 | longmontcolorado.gov

City of Longmont | Planning & Development Services | 385 Kimbark Street



CITY OF LONGMONT | Planning Division

Certificate of Mailing

I, Beth Avery, certify that letters of notification were mailed in accordance with Section 15.02 of the City of Longmont Land Development Code for a

 Neighborhood Meeting

 Notice of Application

 X Planning and Zoning Commission Public Hearing to be held on June 26, 2024

 City Council Public Hearing to be held on

for the application identified as

ModernWest 2

Project Name

On the subject property located at

South side of Rogers Rd between Airport Rd and a future extension of S. Andersen

Site Address or Location Description

The letter(s) was/were sent on June 7, 2024

A copy of the letter and list of recipients is attached.

I certify that the foregoing information is true and correct.

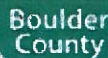
Beth Avery
Signature

6/7/2024
Date

Account	Owner	Mailing Address	Mail City	Mail State	Mail Zip	Site Address
R0511882	1313 INVESTMENTS LLC	650 S CHERRY ST STE 1400	DENVER	CO	80246 8601	NELSON RD
R0613559	ACE PROPERTY INVESTMENTS LLC	1800 DELAWARE PL UNIT 190	LONGMONT	CO	80501 3026	NELSON RD
R0613559	ACE PROPERTY INVESTMENTS LLC	1800 DELAWARE PL UNIT 190	LONGMONT	CO	80501 3024	NELSON RD
R0613559	ACE PROPERTY INVESTMENTS LLC	1800 DELAWARE PL UNIT 190	LONGMONT	CO	80501 3026	NELSON RD
R0613559	ACE PROPERTY INVESTMENTS LLC	1800 DELAWARE PL UNIT 190	LONGMONT	CO	80501 3024	NELSON RD
R0603532	ACTIS LLC	755 DELAWARE AVE SUITE A	LONGMONT	CO	80501 3002	NELSON RD
R0516028	AIRPORT PROP RE LLC	500 MCLENNAN ST	CLEARWATER	FL	33756 0	AIRPORT RD
R0516029	AIRPORT PROP RE LLC	500 MCLENNAN ST	CLEARWATER	FL	33756 0	AIRPORT RD
R0053008	ALLSHOUSE REVOCABLE TRUST	507 CHISHOLM WAY	BERTHOUD	CO	80513-9557 8809	NELSON RD
R0514103	ANDERSEN STORAGE LLC	251 LITTLE FALLS DR	WILMINGTON	DE	19808 451	S ANDERSEN ST
R0052822	ANDERSON EVAN W & KARLY	8953 ROGERS RD	LONGMONT	CO	80503-8561 8953	ROGERS RD
R0052893	BENSCHIEDT STEVEN E	8883 NELSON RD	LONGMONT	CO	80503-8546 8883	NELSON RD
R0616845	BERTELE KIMBERLY S	45 ACORN CREEK CT	LONGMONT	CO	80503 45	ACORN CREEK CT
R0614872	BORNEMEIER DIPIKA	2917 S FLAT CIR	LONGMONT	CO	80503-9072 2917	SOUTH FLAT CIR
R0614859	CAYCHO TERESA R	316 S ANDERSEN ST	LONGMONT	CO	80503 316	S ANDERSEN ST
R0603531	CBSS LLC	755 DELAWARE AVE STE A	LONGMONT	CO	80501 3002	NELSON RD
R0516030	CITY OF LONGMONT	350 KIMBARK ST	LONGMONT	CO	80501-5500 0	AIRPORT RD
R0515499	CITY OF LONGMONT	350 KIMBARK ST	LONGMONT	CO	80501-5500 8715	ROGERS RD
R0614878	CITY OF LONGMONT	350 KIMBARK ST	LONGMONT	CO	80501-5500 0	MOUNTAIN BROOK DR
R0614879	CITY OF LONGMONT	350 KIMBARK ST	LONGMONT	CO	80501-5500 0	MOUNTAIN BROOK DR
R0516064	CITY OF LONGMONT	350 KIMBARK ST	LONGMONT	CO	80501-5500 3290	ROGERS RD
R0614879	CITY OF LONGMONT	350 KIMBARK ST	LONGMONT	CO	80501-5500 0	MOUNTAIN BROOK DR
R0614878	CITY OF LONGMONT	350 KIMBARK ST	LONGMONT	CO	80501-5500 0	MOUNTAIN BROOK DR
R0614861	CORDOVA ALEXIS ET AL	324 S ANDERSEN ST	LONGMONT	CO	80503-9032 324	S ANDERSEN ST
R0515500	COUNTY OF BOULDER	5201 ST VRAIN RD BLDG 1	LONGMONT	CO	80503 10384	AIRPORT RD
R0614851	DFH MANDARIN LLC	2000 N CLAY ST	DENVER	CO	80211 2928	SOUTH FLAT CIR
R0614852	DFH MANDARIN LLC	2000 N CLAY ST	DENVER	CO	80211 2932	SOUTH FLAT CIR
R0614856	DFH MANDARIN LLC	14701 PHILLIPS HWY STE 300	JACKSONVILLE	FL	32256-3742 2985	SOUTH FLAT CIR
R0614851	DFH MANDARIN LLC	14701 PHILLIPS HWY STE 300	JACKSONVILLE	FL	32256-3742 3005	SOUTH FLAT CIR
R0616851	DFH MANDARIN LLC	14701 PHILLIPS HWY STE 300	JACKSONVILLE	FL	32256-3742 2941	BUFFALO FORK LN
R0614887	DFH MANDARIN LLC	14701 PHILLIPS HWY STE 300	JACKSONVILLE	FL	32256-3742 53	ACORN CREEK CT
R0616844	DFH MANDARIN LLC	14701 PHILLIPS HWY STE 300	JACKSONVILLE	FL	32256-3742 41	ACORN CREEK CT
R0614857	DFH MANDARIN LLC	14701 PHILLIPS HWY STE 300	JACKSONVILLE	FL	32256-3742 2981	SOUTH FLAT CIR
R0614888	DFH MANDARIN LLC	14701 PHILLIPS HWY STE 300	JACKSONVILLE	FL	32256-3742 57	ACORN CREEK CT
R0614874	DFH MANDARIN LLC	14701 PHILLIPS HWY STE 300	JACKSONVILLE	FL	32256-3742 2909	SOUTH FLAT CIR
R0614838	DFH MANDARIN LLC	14701 PHILLIPS HWY STE 300	JACKSONVILLE	FL	32256-3742 2925	BUFFALO FORK LN
R0053068	EVEN MICHAEL R TRUST	8918 ROGERS RD	LONGMONT	CO	80503-8563 8918	ROGERS RD
R0614837	FORBES CAROL FRIEDMAN	2929 BUFFALO FORK LN	LONGMONT	CO	80503-9049 2929	BUFFALO FORK LN
R0053380	FRONT RANGE REAL ESTATE PARTNERS LLC	1067 S HOVER RD STE E-113	LONGMONT	CO	80501-7904 8939	NELSON RD
R0052859	GORDON LINDA S	PO BOX 472	HYGIENE	CO	80533-0472 8877	ROGERS RD
R0614858	HABITAT FOR HUMANITY OF THE ST VRAIN VALLEY	PO BOX 333	LONGMONT	CO	80502-0333 312	S ANDERSEN ST
R0614855	HABITAT FOR HUMANITY OF THE ST VRAIN VALLEY	PO BOX 333	LONGMONT	CO	80502-0333 300	S ANDERSEN ST
R0614857	HABITAT FOR HUMANITY OF THE ST VRAIN VALLEY	PO BOX 333	LONGMONT	CO	80502-0333 308	S ANDERSEN ST

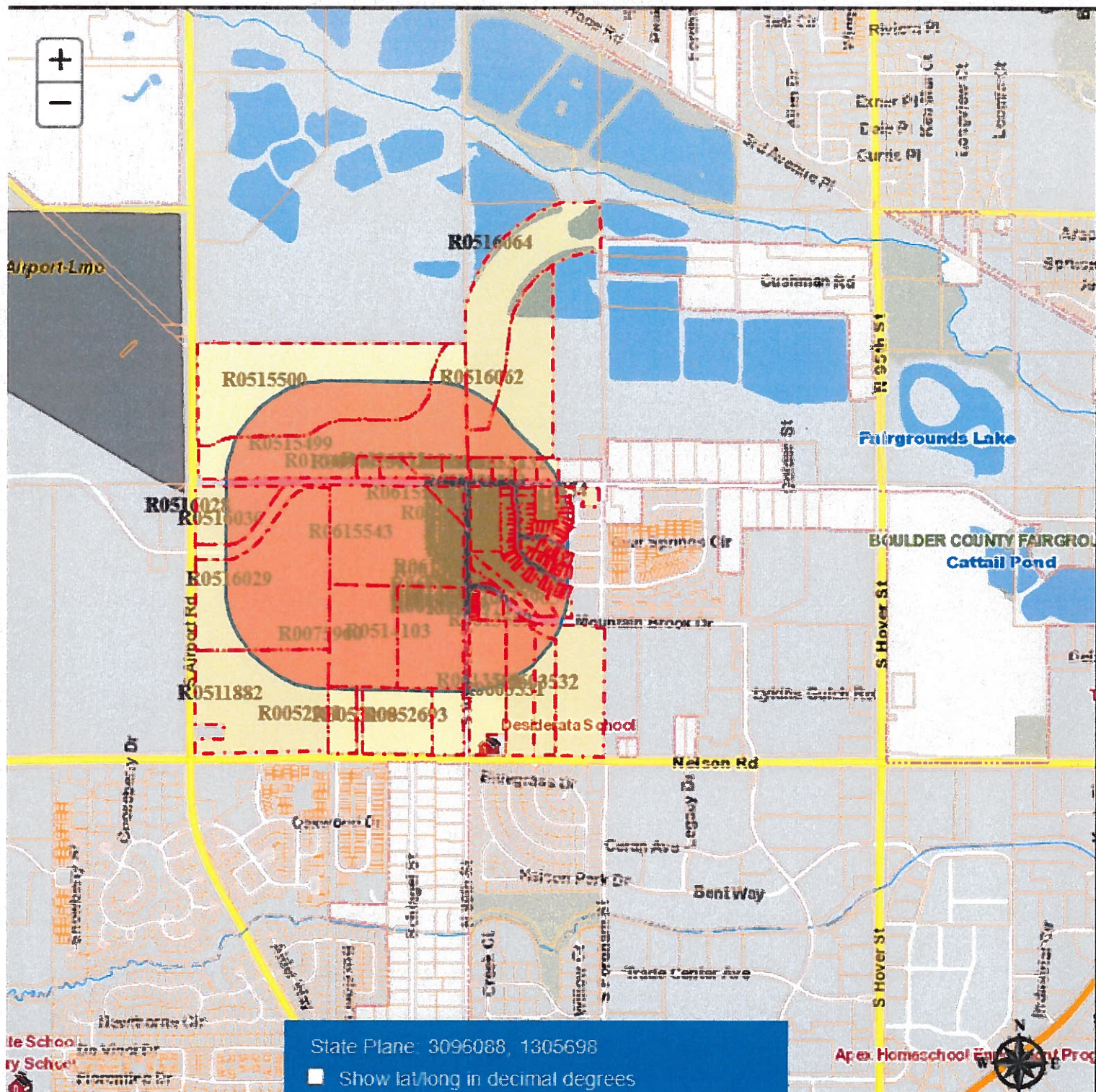
Account	Owner	Mailing Address	Mail City	Mail State	Mail Zip	Site Address
R0614956	HABITAT FOR HUMANITY OF THE ST VRAIN VALLEY	PO BOX 333	LONGMONT	CO	80502-0333	304 SANDERSEN ST
R0614886	HOLLAND JEFFREY B	1350 COLLEGE AVE 100	BOULDER	CO	80302 49	ACORN CREEK CT
R0094812	HYDE KEITH D & DARLENE M	8845 ROGERS RD	LONGMONT	CO	80503-8515	8845 ROGERS RD
R0052849	JACOBS GRANT A	8921 ROGER RD	LONGMONT	CO	80503-8561	8921 ROGERS RD
R0614877	JENSEN KADE ALEXANDER	29 ACORN CREEK CIR	LONGMONT	CO	80503 29	ACORN CREEK CT
R0094813	JONES DIANNE M	8811 ROGERS RD	LONGMONT	CO	80503 8811	ROGERS RD
R0052901	MCCLEARY TAMARA R	8701 NELSON RD	LONGMONT	CO	80503 8701	NELSON RD
R0075860	MODERNWEST LONGMONT LLC	6185 BRIGADOON CT	LONGMONT	CO	80503-8897	3632 NELSON RD
R0615543	MODERNWEST LONGMONT LLC	6185 BRIGADOON CT	LONGMONT	CO	80503-8897	8876 ROGERS RD
R0614889	MOHAN PARMESH PUVADA ET AL	61 ACORN CREEK CIR	LONGMONT	CO	80503 61	ACORN CREEK CT
R0614864	MOUNTAIN BROOK METROPOLITAN DISTRICT	141 UNION BLVD STE 113	LAKEWOOD	CO	80228 3010	MOUNTAIN BROOK DR
R0614865	MOUNTAIN BROOK METROPOLITAN DISTRICT	141 UNION BLVD STE 113	LAKEWOOD	CO	80228 2920	MOUNTAIN BROOK DR
R0614881	MOUNTAIN BROOK METROPOLITAN DISTRICT	141 UNION BLVD STE 113	LAKEWOOD	CO	80228 0	ROGERS RD
R0614875	MOUNTAIN BROOK METROPOLITAN DISTRICT	141 UNION BLVD STE 113	LAKEWOOD	CO	80228 2936	SOUTH FLAT CIR
R0614883	MOUNTAIN BROOK METROPOLITAN DISTRICT	141 UNION BLVD STE 113	LAKEWOOD	CO	80228 0	MOUNTAIN BROOK DR
R0616853	MOUNTAIN BROOK METROPOLITAN DISTRICT	141 UNION BLVD STE 113	LAKEWOOD	CO	80228 2957	BUFFALO FORK LN
R0614863	MOUNTAIN BROOK METROPOLITAN DISTRICT	141 UNION BLVD STE 113	LAKEWOOD	CO	80228 2969	SOUTH FLAT CIR
R0614882	MOUNTAIN BROOK METROPOLITAN DISTRICT	141 UNION BLVD STE 113	LAKEWOOD	CO	80228 0	ROGERS RD
R0614876	MOUNTAIN BROOK METROPOLITAN DISTRICT	141 UNION BLVD STE 113	LAKEWOOD	CO	80228 0	MOUNTAIN BROOK DR
R0616854	MOUNTAIN BROOK METROPOLITAN DISTRICT	141 UNION BLVD STE 113	LAKEWOOD	CO	80228 25	ACORN CREEK CT
R0614832	MOUNTAIN BROOK PARTNERS LLC	700 KEN PRATT BLVD STE 113	LONGMONT	CO	80501 2944	SOUTH FLAT CIR
R0614852	MOUNTAIN BROOK PARTNERS LLC	700 KEN PRATT BLVD STE 113	LONGMONT	CO	80501 3001	SOUTH FLAT CIR
R0614802	MOUNTAIN BROOK PARTNERS LLC	700 KEN PRATT BLVD STE 113	LONGMONT	CO	80501 3000	SOUTH FLAT CIR
R0614870	MOUNTAIN BROOK PARTNERS LLC	700 KEN PRATT BLVD STE 113	LONGMONT	CO	80501 2925	SOUTH FLAT CIR
R0614850	MOUNTAIN BROOK PARTNERS LLC	700 KEN PRATT BLVD STE 113	LONGMONT	CO	80501 3009	SOUTH FLAT CIR
R0614836	MOUNTAIN BROOK PARTNERS LLC	700 KEN PRATT BLVD STE 113	LONGMONT	CO	80501 2960	SOUTH FLAT CIR
R0614834	MOUNTAIN BROOK PARTNERS LLC	700 KEN PRATT BLVD STE 113	LONGMONT	CO	80501 2952	SOUTH FLAT CIR
R0614833	MOUNTAIN BROOK PARTNERS LLC	700 KEN PRATT BLVD STE 113	LONGMONT	CO	80501 2948	SOUTH FLAT CIR
R0614895	MOUNTAIN BROOK PARTNERS LLC	700 KEN PRATT BLVD STE 113	LONGMONT	CO	80501 2972	SOUTH FLAT CIR
R0614866	MOUNTAIN BROOK PARTNERS LLC	700 KEN PRATT BLVD STE 113	LONGMONT	CO	80501 2941	SOUTH FLAT CIR
R0614896	MOUNTAIN BROOK PARTNERS LLC	700 KEN PRATT BLVD STE 113	LONGMONT	CO	80501 2976	SOUTH FLAT CIR
R0614863	MOUNTAIN BROOK PARTNERS LLC	700 KEN PRATT BLVD STE 113	LONGMONT	CO	80501 2953	SOUTH FLAT CIR
R0614830	MOUNTAIN BROOK PARTNERS LLC	700 KEN PRATT BLVD STE 113	LONGMONT	CO	80501 2933	BUFFALO FORK LN
R0614867	MOUNTAIN BROOK PARTNERS LLC	700 KEN PRATT BLVD STE 113	LONGMONT	CO	80501 2937	SOUTH FLAT CIR
R0614849	MOUNTAIN BROOK PARTNERS LLC	700 KEN PRATT BLVD STE 113	LONGMONT	CO	80501 3013	SOUTH FLAT CIR
R0614892	MOUNTAIN BROOK PARTNERS LLC	700 KEN PRATT BLVD STE 113	LONGMONT	CO	80501 2934	BUFFALO FORK LN
R0614819	MOUNTAIN BROOK PARTNERS LLC	700 KEN PRATT BLVD STE 113	LONGMONT	CO	80501 2964	SOUTH FLAT CIR
R0614861	MOUNTAIN BROOK PARTNERS LLC	700 KEN PRATT BLVD STE 113	LONGMONT	CO	80501 2961	SOUTH FLAT CIR
R0614835	MOUNTAIN BROOK PARTNERS LLC	700 KEN PRATT BLVD STE 113	LONGMONT	CO	80501 2956	SOUTH FLAT CIR
R0616849	MOUNTAIN BROOK PARTNERS LLC	700 KEN PRATT BLVD STE 113	LONGMONT	CO	80501 2949	BUFFALO FORK LN
R0614854	MOUNTAIN BROOK PARTNERS LLC	700 KEN PRATT BLVD STE 113	LONGMONT	CO	80501 2993	SOUTH FLAT CIR
R0614855	MOUNTAIN BROOK PARTNERS LLC	700 KEN PRATT BLVD STE 113	LONGMONT	CO	80501 2989	SOUTH FLAT CIR
R0614891	MOUNTAIN BROOK PARTNERS LLC	700 KEN PRATT BLVD STE 113	LONGMONT	CO	80501 2930	BUFFALO FORK LN

Account	Owner	Mailing Address	Mail City	Mail State	Mail Zip	Site Address
R0614858	MOUNTAIN BROOK PARTNERS LLC	700 KEN PRATT BLVD STE 113	LONGMONT	CO	80501 2977	SOUTH FLAT CIR
R0614853	MOUNTAIN BROOK PARTNERS LLC	700 KEN PRATT BLVD STE 113	LONGMONT	CO	80501 2997	SOUTH FLAT CIR
R0614890	MOUNTAIN BROOK PARTNERS LLC	700 KEN PRATT BLVD STE 113	LONGMONT	CO	80501 2926	BUFFALO FORK LN
R0614859	MOUNTAIN BROOK PARTNERS LLC	700 KEN PRATT BLVD STE 113	LONGMONT	CO	80501 2973	SOUTH FLAT CIR
R0614931	MOUNTAIN BROOK PARTNERS LLC	700 KEN PRATT BLVD STE 113	LONGMONT	CO	80501 2940	SOUTH FLAT CIR
R0614869	MOUNTAIN BROOK PARTNERS LLC	700 KEN PRATT BLVD STE 113	LONGMONT	CO	80501 2929	SOUTH FLAT CIR
R0616848	MOUNTAIN BROOK PARTNERS LLC	700 KEN PRATT BLVD STE 113	LONGMONT	CO	80501 2953	BUFFALO FORK LN
R0614901	MOUNTAIN BROOK PARTNERS LLC	700 KEN PRATT BLVD STE 113	LONGMONT	CO	80501 2996	SOUTH FLAT CIR
R0614899	MOUNTAIN BROOK PARTNERS LLC	700 KEN PRATT BLVD STE 113	LONGMONT	CO	80501 2988	SOUTH FLAT CIR
R0614898	MOUNTAIN BROOK PARTNERS LLC	700 KEN PRATT BLVD STE 113	LONGMONT	CO	80501 2984	SOUTH FLAT CIR
R0614918	MOUNTAIN BROOK PARTNERS LLC	700 KEN PRATT BLVD STE 113	LONGMONT	CO	80501 2968	SOUTH FLAT CIR
R0614897	MOUNTAIN BROOK PARTNERS LLC	700 KEN PRATT BLVD STE 113	LONGMONT	CO	80501 2980	SOUTH FLAT CIR
R0614848	MOUNTAIN BROOK PARTNERS LLC	700 KEN PRATT BLVD STE 113	LONGMONT	CO	80501 3017	SOUTH FLAT CIR
R0614900	MOUNTAIN BROOK PARTNERS LLC	700 KEN PRATT BLVD STE 113	LONGMONT	CO	80501 2992	SOUTH FLAT CIR
R0614864	MOUNTAIN BROOK PARTNERS LLC	700 KEN PRATT BLVD STE 113	LONGMONT	CO	80501 2949	SOUTH FLAT CIR
R0614868	MOUNTAIN BROOK PARTNERS LLC	700 KEN PRATT BLVD STE 113	LONGMONT	CO	80501 2933	SOUTH FLAT CIR
R0614860	MOUNTAIN BROOK PARTNERS LLC	700 KEN PRATT BLVD STE 113	LONGMONT	CO	80501 2965	SOUTH FLAT CIR
R0614862	MOUNTAIN BROOK PARTNERS LLC	700 KEN PRATT BLVD STE 113	LONGMONT	CO	80501 2957	SOUTH FLAT CIR
R0614865	MOUNTAIN BROOK PARTNERS LLC	700 KEN PRATT BLVD STE 113	LONGMONT	CO	80501 2945	SOUTH FLAT CIR
R0616846	MOUNTAIN BROOK PARTNERS LLC	700 KEN PRATT BLVD STE 113	LONGMONT	CO	80501 2938	BUFFALO FORK LN
R0104093	MURPHEY JAMES PATRICK	1017 S BLACK AVE	BOZEMAN	MT	59715 8769	ROGERS RD
R0614960	PADILLA PATRICIA	320 S ANDERSEN ST	LONGMONT	CO	80503-9032 320	S ANDERSEN ST
R0616850	PERRY JENNIFER & DYLAN	2945 BUFFALO FORK LN	LONGMONT	CO	80503-9049 2945	BUFFALO FORK LN
R0614962	QUIROZ KAREN	328 S ANDERSEN ST	LONGMONT	CO	80503 328	S ANDERSEN ST
R0616852	RIESZ DAVID B & ALICIA L REDDISH	2937 BUFFALO FORK LN	LONGMONT	CO	80503 2937	BUFFALO FORK LN
R0614875	SHOOK THOMAS	2905 SOUTH FLAT CIR	LONGMONT	CO	80503 2905	SOUTH FLAT CIR
R0616843	SHUKLA GAURAV & PRIYANKA SHARMA	2727 NELSON RD J103	LONGMONT	CO	80503 37	ACORN CREEK CT
R0052721	SMITH ROBERT TRISTRAM & TRACY LEE	8985 ROGERS RD	LONGMONT	CO	80503-8561 8985	ROGERS RD
R0614873	SPENCER KEN LLOYD	2913 S FLAT CIR	LONGMONT	CO	80503-9072 2913	SOUTH FLAT CIR
R0614950	STROUP TIMOTHY & GRACE SINDT	9162 W BELMONT AVE	LITTLETON	CO	80123 2924	SOUTH FLAT CIR
M8901067	TERHAAR PAUL H	735 ROBERT ST	LONGMONT	CO	80503-9442 8939	NELSON RD
R0614876	TRUNCK STEPHEN P & PATRICIA E	9020 W ROGERS RD	LONGMONT	CO	80501-8563 9020	W ROGERS RD
R0053432	VANDEHOEF RAYMOND L & ELIZABETH ANNE	9017 ROGERS RD	LONGMONT	CO	80503-8561 9017	ROGERS RD
R0614954	VETERANS COMMUNITY PROJECT	8900 THOOST AVE	KANSAS CITY	MO	64131 3095	MOUNTAIN BROOK DR
R0616841	VIG DEVON & ANDREW	33 ACORN CREEK CT	LONGMONT	CO	80503 33	ACORN CREEK CT
R0616062	WV GOLDEN FOUNDATION INC ET AL	2045 LONGS PEAK AVE	LONGMONT	CO	80501 0	ROGERS RD
R0615542	WILLIAMS MARTHA A & LESLIE J JR	8876 ROGERS RD	LONGMONT	CO	80503-8500 8876	ROGERS RD
R0614871	WILSON SCOTT A & JILL G	2921 SOUTH FLAT CIR	LONGMONT	CO	80503 2921	SOUTH FLAT CIR



Property Search

Name or address wrong?

[Report a different issue](#)



CITY OF LONGMONT | Planning and Development Services

June 12, 2024

Notice of Public Hearing

At its regular meeting to be held Wednesday, June 26, 2024, at 7:00 PM in the City Council Chambers of the Civic Center Complex located at 350 Kimbark Street, Planning and Zoning Commission will hold a public hearing on and consider:

Proposal:	ModernWest Parcel 2 Concept Plan Amendment to incorporate land uses permitted in the MU-E Zone, including residential uses
Location:	South side of Rogers Road between Airport Road and a future extension of S. Andersen Street
Area:	27.75 acres
Existing Use:	Undeveloped
Zoning:	Mixed Use – Employment
Property Owner:	ModernWest Longmont, LLC
Applicant:	ModernWest Longmont, LLC

Surrounding land uses and zoning

North:	Unincorporated Boulder County Agricultural
South:	R-MN
East:	Unincorporated Boulder County Agricultural and City of Longmont MU-E
West:	MU-E

Comprehensive Plan Specifications: Mixed-Use Employment

Any person having an interest in the above proceeding is invited to be present and speak at the public hearing or, if unable to attend, submit written comments to the Planning Division, City of Longmont, Development Services Center, 385 Kimbark Street, Longmont CO 80501. Comments submitted to the Planning Division prior to the public hearing will be forwarded to the City Council. If you have any questions, please call the staff planner.

If you are unfamiliar with the City Council Procedures and intend to appear before the Council, please contact the City Clerk's Office for further information at 303-651-8649.

Applicant and staff contact information are on the opposite side of this page.

Applicant Contact:

Derek Guarascio
ModernWest

303-717-5309

derek@modernwestcolorado.com

City Staff Planner:

Jennifer Hewett-Apperson

(303) 651-8439

jennifer.hewettapperson@longmontcolorado.gov

Project File Number: DV-CONCEPT PLAN-23-00005