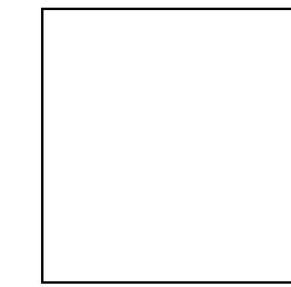


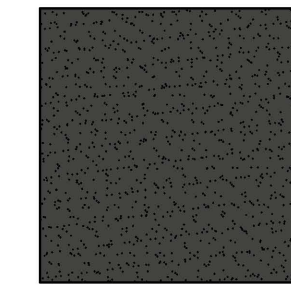
### MATERIAL LEGEND



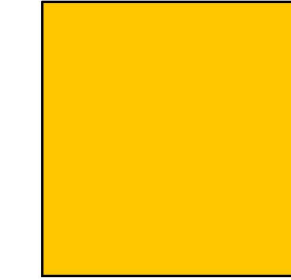
MODULAR FACE BRICK  
COLOR:  
B1 = "SLATE GRAY"  
SMOOTH BY HEBRON  
BRICK COMPANY



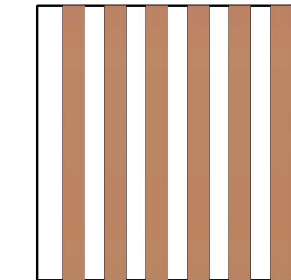
ALUMINUM CANOPY  
COLOR: WHITE



EXTERIOR INSULATION  
FINISH SYSTEM (E.I.F.S.)  
COLOR:  
C1 = "IRON ORE" SW 7069  
BY SHERWIN WILLIAMS



**GOLD UNDERSCORE**



ALUMINUM BATTEN SYSTEM  
MFR: B+N INDUSTRIES  
SIZE: 2"X2" PROFILE  
COLOR: WOOD GRAIN,



EXTERIOR WINDOW ASSEMBLY  
COLOR: DARK BRONZE



ALPOLIC METAL PANEL  
COLOR: DON GRAY

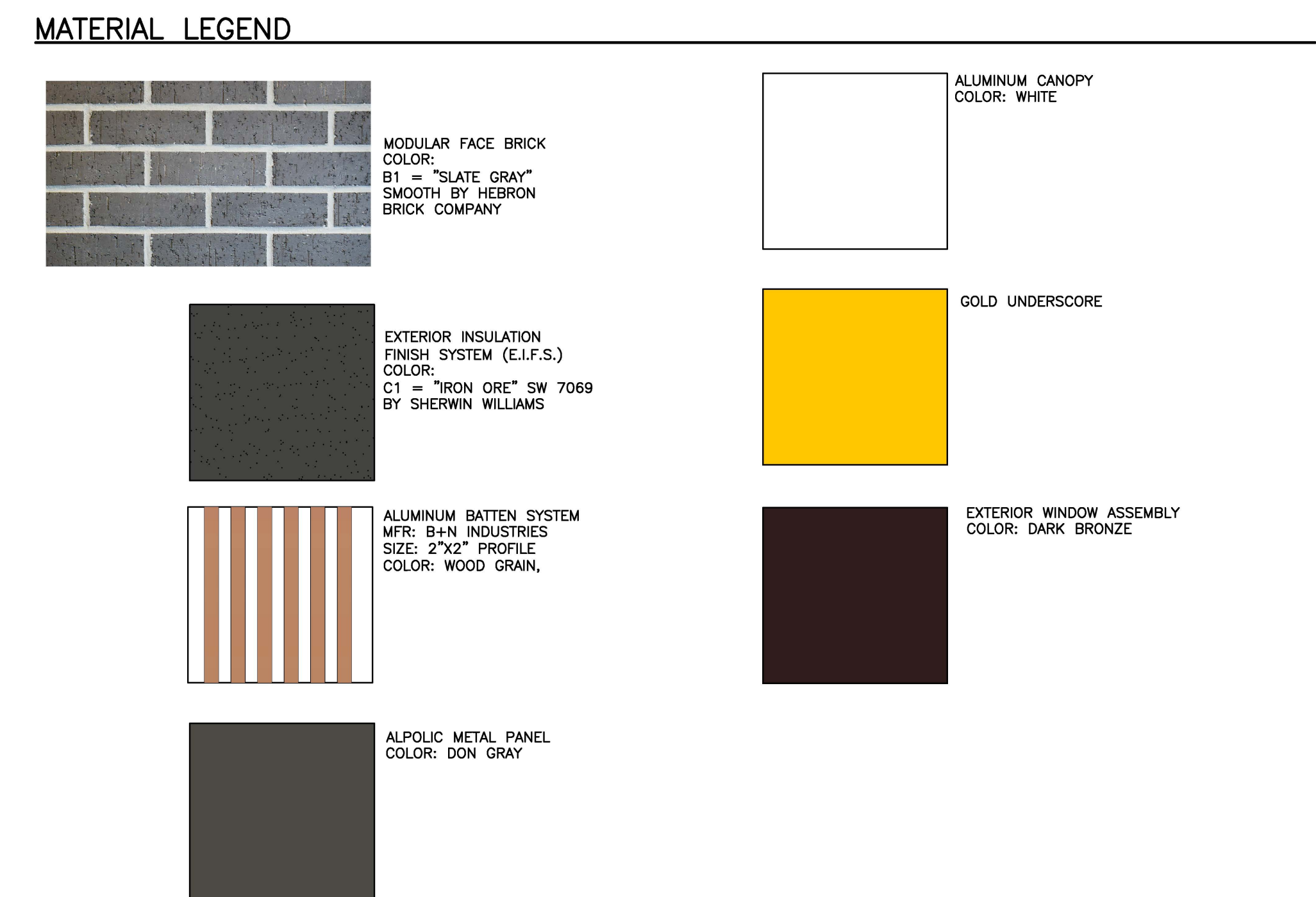
$$\frac{1}{A2.0} \quad \text{WEST ELEVATION} \quad 1/4'' = 1'-0''$$



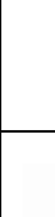
**SOUTH ELEVATION**

[illegible]

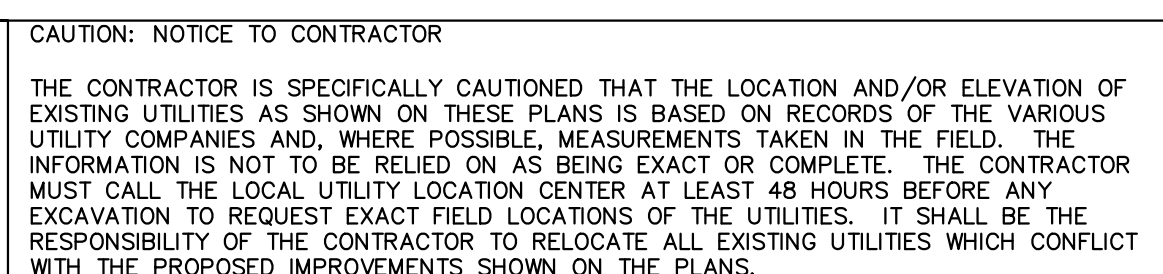
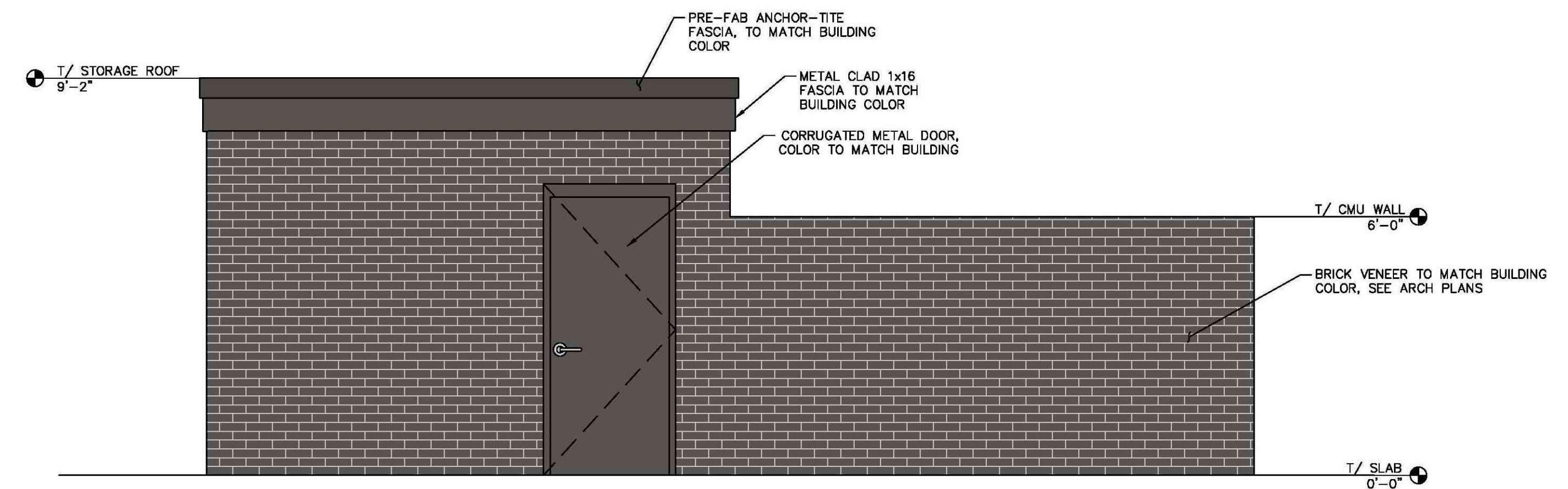
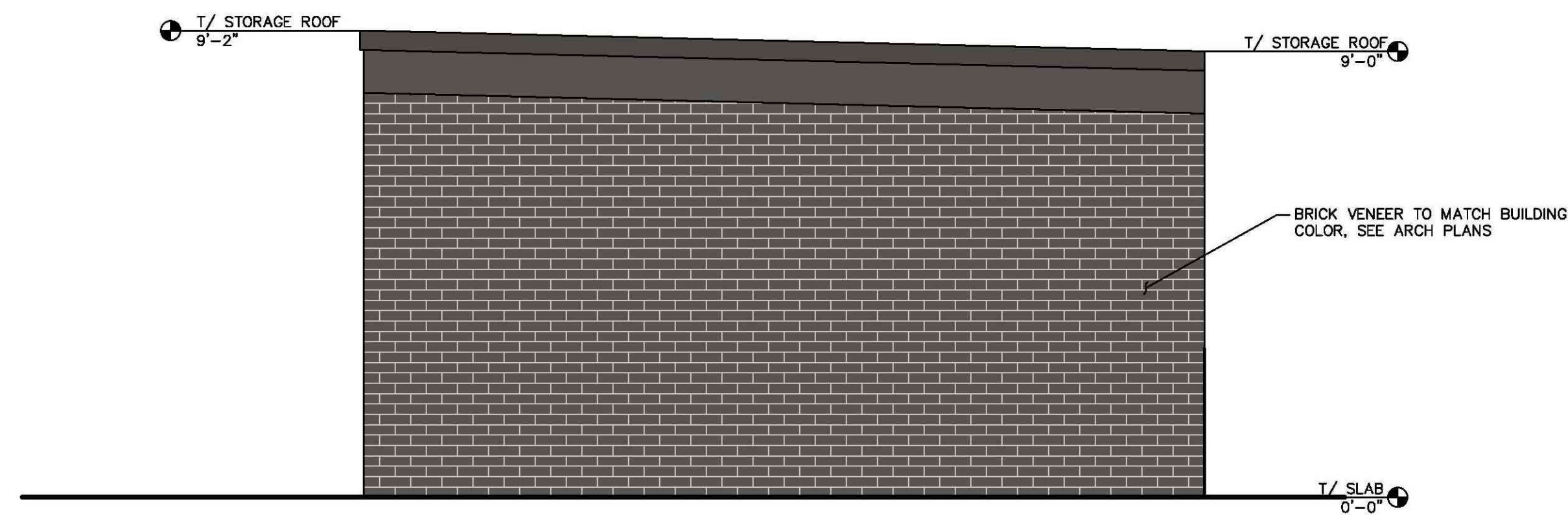




$$\frac{2}{A2.0} \quad \text{NORTH ELEVATION} \quad 1/4" = 1'-0"$$

SHEET NO. <b>A2.1</b> EXTERIOR ELEVATIONS	TITLE	2022 STANDARD BUILDING - B520	DRAWN BY CS	PREPARED FOR: <b>McDonald's USA, LLC</b> © 2022 McDonald's USA, LLC	PREPARED BY:  Arris Architecture, LLC 3436 New Castle Dr. Loveland, CO 80538 970.988.6302 coreys@arrisinc.net	REV	DATE	BY
	DESCRIPTION	4597-WOOD/WOOD	STD ISSUE DATE					
	DESCRIPTION	WOOD BEARING WALLS WHARDIE PLANK EXTERIOR FINISH	REVIEWED BY					
	DESCRIPTION	WOOD TRUSS ROOF FRAMING	DATE ISSUED					
	DESCRIPTION	ALPOL/C/ATTEN/HARDIE PLANK EXTERIOR FINISH	ARRIS PROJECT #					
	SITE ID	005-1014	SITE ADDRESS	SANDSTONE MARKET PLACE SUBDIVISION BUILDING NO. 1, REAR PT. B, LONGMONT, CO 80504				



[illegible]